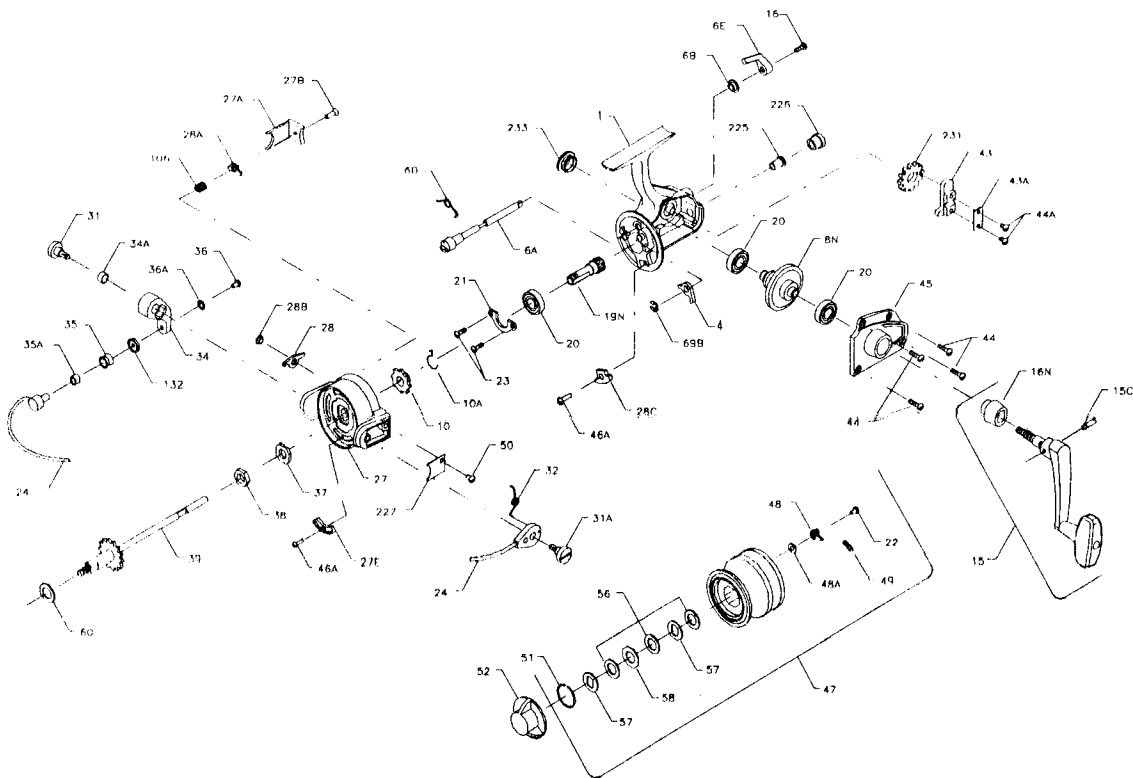




PARTS AND PRICE LIST FOR MODEL 4500SS



Key No.	Part No.	Description	Price	Key No.	Part No.	Description	Price
1	001P4500	Housing	\$9.00	35A	035A704	Line Roller Bushing	\$.45
4	*004N4400	Dog	2.00	36	036 750	Bail Stud Screw	.65
6A	006A450	Eccentric	2.50	36A	036A750	Lock Washer	.45
6B	006B750	Eccentric Liner	.45	37	037 450	Rotor Washer	.55
6D	006D710	Eccentric Spring	.45	38	038 550	Rotor Nut	.50
6E	006E750	Eccentric Lever	1.00	39	039N4500	Spool Shaft	5.00
8N	008N5500	Main Gear	12.60	43	043N5500	Crosswind Block	2.05
10	*010N4400	Ratchet	2.50	43A	043A550	Crosswind Block Plate	.50
10A	*230N5500	Anti Reverse Spring	.60	44	044 704	Cover Screw (4 req.)	.45
15	015 5500	Handle	14.75	44A	022 750	Crosswind Block Screw (2 req.)	.45
15C	015C650	Handle Pivot Screw	.55	45	045 5500	Housing Cover	4.00
16	016 910	Eccentric Screw	.50	46A	046A704	Screw	.45
16N	016 5500	Handle Collar	1.75	47	047 4500	Spool (Complete)	22.00
19N	019N4500	Pinion	5.50	48	048 450	Click Tongue	.50
20	020 722	Ball Bearing	12.00	48A	048A750	Click Tongue Washer	.45
21	021 450	Bearing Cover	1.00	49	049 710	Click Tongue Spring	.50
22	022 750	Spool Click Screw	.45	50	050 712	Bail Spring Cover Screw	.50
23	023 750	Bearing Cover Screw	.45	51	051 710	Retaining Ring	.50
24	024 450	Bail Wire	8.80	52	052 550	Drag Knob	5.05
27	027 4500	Rotor	5.75	56	056 710	Drag Washer-HT 100 (3 req.)	.80
27A	027A450	Bail Trip Cover	1.25	57	057 710	Metal Keyed Washer (2 req.)	.45
27B	027B420	Rotor End Screw	.55	58	058 710	Metal Washer (Octagon)	.45
27E	027E5500	Balance Weight	.55	60	060 450	Thrust Washer	.60
28	028 450	Trip Lever	1.25	69B	069B4400	Retaining Ring	.90
28A	028A440	Cam Lever	1.25	106	106 5500	Lever Spring	.50
28B	028B5500	Trip Lever Bushing	.90	132	132 450	Roller Washer	.90
28C	028C440	Trip Cam	.90	225	225 5500	Crosswind Shaft Bushing	1.25
31	031 550	Bail Arm Screw	1.00	226	226 5500	Bushing Cap Cover	1.15
31A	031A450	Trip Arm Screw	1.00	227	227 440	Bail Spring Cover	.50
32	032 440	Bail Spring	.90	231	231N4500	Crosswind Gear	3.50
34	034 450	Bail Arm	2.75	233	233 440	Bearing Cover	2.25
34A	034A550	Bail Arm Bushing	.45	**	**300 5500	Power Handle	15.50
35	035 704	Line Roller	3.70				

* These parts will only work on reels which have a slot in the dog post to accept the retaining ring.

**Not Shown

Older models must order the following: 004 450.....1.05 010 440..... .90